

TRANSMITTING PRESSURE SWITCH

FOR PRESSURE AND FLOW
SWITCHING WHERE
HYGIENE, CORROSION,
VISCOSITY OR
SOLIDIFICATION
ARE A FACTOR



TEFLON® WETTED PARTS

Designed to provide alarm or control contacts for chemical, hygienic, viscous and waste duties where only a flush diaphragm in contact with the process is desirable, the TD series combines a high accuracy pressure switch with a stainless steel isolating diaphragm seal.

Typical duties include hygienic, corrosive waste and viscous fluids in the food, chemical and water industries. Especially suitable for use with slurries or in situations where the process fluid may solidify.

The transmission system is charged by a high vacuum filling procedure which gives sensitive, stable operation with reduced temperature effects.

HIGH VACUUM FILLING PROCEDURE

FILL LIQUID TO SUIT DUTY

ACCURATE AND REPEATABLE

The high quality switch mechanism gives volt free change over contacts with a life of 100,000 to 300,000 operations dependent on the electrical load.

The switch is offered as an integral bolt on unit or, where access considerations demand a remote version, a switch with an interconnecting capillary is offered.

All switches are fitted with set point adjustment allowing on site recalibration if required.

SPECIFICATION

Transmitter

316 stainless steel flange and diaphragm.

Switch Contacts

Single pole change over 5 AMP 250 volt AC.

Switch Enclosure

IP65 weatherproof.

Switch Repeatability

Within $\pm 1\%$ of nominal range at constant temperature.

Maximum Pressure

8,000kPa.

Pressure Setting

Min. 20kPa through 5,000kpa.

Process Temperature

-40 to 200°C depending on fill fluid

Temperature Ambient

-10 to +60°C.

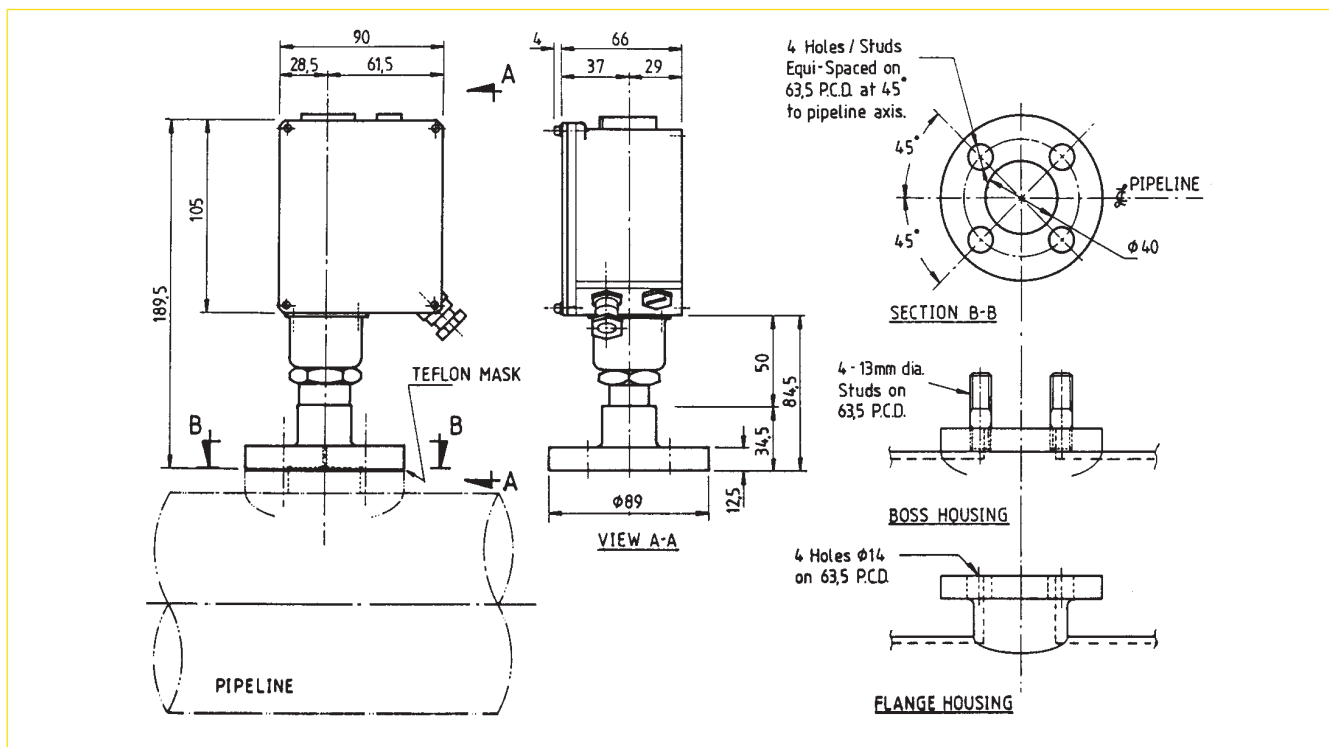
Electrical Connection

PG9.

Process Connection

Flange see over for standard.
Others on request.

® Teflon is a registered trademark of Dupont



ORDER CODE

TD	CODE	INSTALLATION	
	R	Remote switch connected to isolating diaphragm seal via 2m fine bore copper capillary with an outer sheath of fire retardent grade plastic compound.	
	RSS	Remote switch connected to isolating diaphragm seal via 2m fine bore stainless steel capillary within a spiral outer of stainless steel armour.	
	D	Direct mounted to switch.	
		CODE	CONNECTION
		1	KDG type flange.
		2	1" Triclover
		3	2" Triclover
		4	3" Triclover
		5	1" BSM
		6	2" BSM
		7	3" BSM
		8	60mm diameter 2 part bolted, stainless steel seal, welded diaphragm
		9	75mm diameter 2 part bolted, stainless steel seal, welded diaphragm
		10	90mm diameter 2 part bolted, stainless steel seal, welded diaphragm
		99	Special on request
		CODE	SWITCH POINT
		XX	Specify switch operating pressure in kPa
TD	R	2	XX
Typical Order Code			

OPTIONS

All Teflon® wetted parts.
 Other wetted part metals.
 Variety of fill fluids available for high temperature, low temperature, food, oxygen and chlorine applications.

N.A.T.A. calibration.
 Other isolating diaphragm seals available.

THE COMPANY RESERVES THE RIGHT TO MODIFY THIS DESIGN WITHOUT NOTIFICATION

Measurement Resources Pty Ltd

A.B.N. 62 003 247 738

33 – 37 COLLEGE STREET
 P.O. BOX 145
 GLADESVILLE, N.S.W. 2111 AUSTRALIA
 TELEPHONE: (02) 9816 3377 FAX: (02) 9816 3806
 INTERNATIONAL CODE: 61 + 2
 NATIONAL FREE CALL NUMBER: 1 800 626 476
 EMAIL: sydney@measurement-resources.com.au
 WEBSITE: www.measurement-resources.com.au

DISTRIBUTOR: