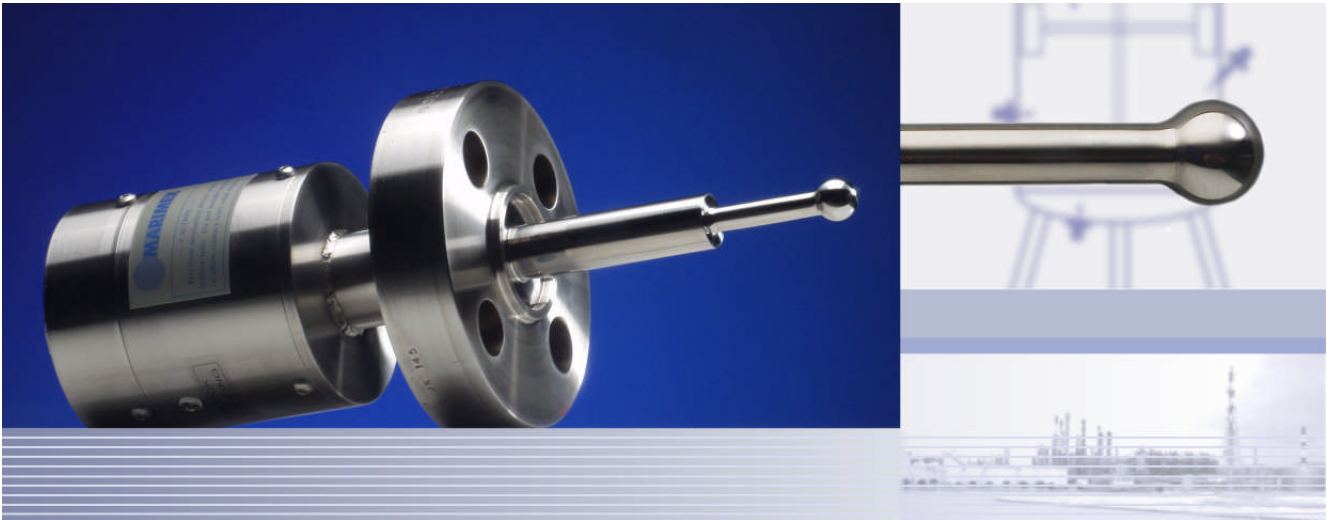


# ViscoScope VA-300S sensor

The sensor for special applications




ViscoScope-Sensor Model **VA-300S-ST** with flange 1" 2500#, non-active-extension (NAE) 25 x 100 mm / 1 x 4", Riser and shorter probe

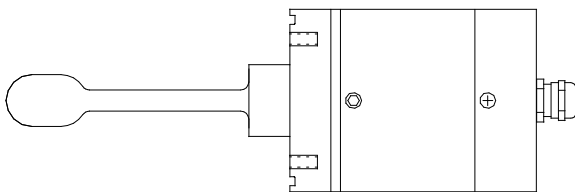
Sometimes process technology, applications or unusual mounting situations demand the design of the special sensor, the **VA-300S** (special) model.

If it is technically possible, it can be accomplished with this instrument, e.g. shortened sensor probes, different sensor probe shapes, integrated or screw-on sensor protection, NPT-threads, special flanges and other customer-specific process connections.

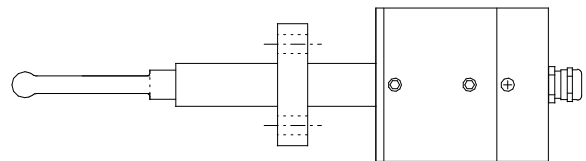
Our many years of experience put us in the ideal position to deal with new challenges and ideas, to understand the special requirements of your process and develop suitable solutions.

# Sensor – Specification

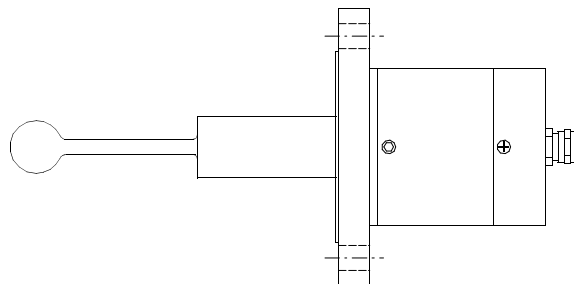
Sensor type	<b>VA-300S - dependend on construction</b>
Viscosity range	0.1 – 2,500,000 mPa·s x gr/cm <sup>3</sup> , dependend on construction
Calibration	in 3 decades, option 4 decades
Probe size	dependend on construction
Material	1.4571 and 316L option: Hastelloy C22, Duplex 2205, teflon coating
Protection	IP65
Process temperature (Pt100 is integrated into viscosity probe)	LT from -40°C to 130°C / -40°F to 270°F ST from -40°C to 300°C / -40°F to 570°F HT from -40°C to 450°C / -40°F to 840°F ST and HT with air cooling, dependend on installation
Process connection Flange	Standard DN80 PN40 or ANSI 3" 300# others on request
Pressure	Vacuum up to 450 bar / 6,500 psi
Installation	Installation in any orientation in reactor, vessel, pipe, flow-through cell
Resonance frequency Shear rate	~ 550 bis 635 Hz, dependend on construction ~ 3450 bis 4000 sec <sup>-1</sup> , dependend on construction
Cable length Sensor - Transmitter	maximum 1,000 meters / 3,330 feet short cable length recommended for very low viscosities
Speed of flow	up to 10 m / sec. or 33 feet / sec., dependend on installation
Reproducibility of reading	± 0,3% to ± 0,5% or ± 1 Digit dependend on probe type
Accuracy of reading	± 1% or ± 1 Digit dependend on probe type
option: hazardous area	ATEX:  II 1/2 G EEx ia IIC T3 – T6
option: non-active-extension (NAE)	Eliminates no-flow areas in a pipe connection on a reactor, in a T-piece or flow-through cell. Can also be used to bridge gaps in open channel applications. Sizes on request.



VA-300S without flange, with O-ring groove and NAE



VA-300S with custom-made flange, NAE and shorter probe



VA-300S with big sphere and NAE