

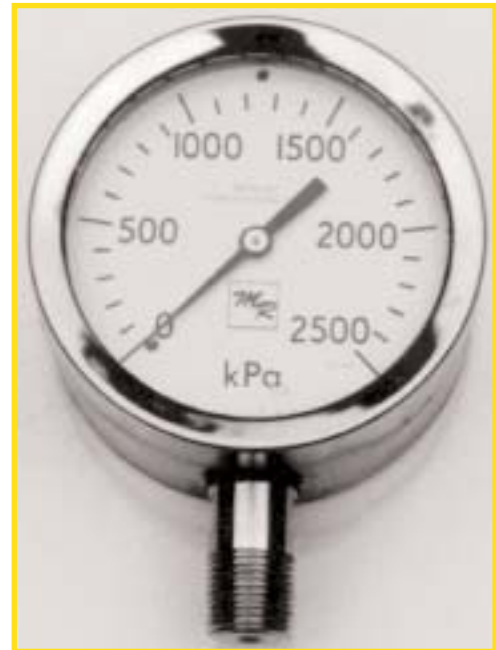
SAFETY PATTERN PRESSURE GAUGE

ALL 316 STAINLESS STEEL
CONSTRUCTION

FULL SAFETY PATTERN
CONSTRUCTION

SAFETY GLASS WINDOW

CAN BE LIQUID FILLED -
NO LEAKS



The SP series safety pattern gauge has a series of new and unique features that have given rise to new standards of safety and sealing. Each and every direct mounting gauge when it leaves the factory is capable of being glycerine or silicone oil filled without the need for any extra parts or specialist sealing work. The new backplate features a specially designed membrane that forms a perfect seal every time, compensating for any atmospheric changes that could affect the calibration of the filled gauge.

The SP series has a truly integral baffle wall between the gauge internals and the dial. As such there is no dependence on welding or other joining methods previously used in safety pattern construction. The 'Safecase' blow out back provides greater operator protection, over and above the requirements of AS 1349 and EN837. Being retained on the gauge by a centre screw, it prevents the risk of injury due to flying debris from the rear of the gauge in the event of a major overload.

SPECIFICATION

Nominal Diameter

100mm

Case & Bezel

Stainless Steel 316 (DIN 1.4571)

Safety Features

Stainless steel 'Safecase' full blow
Out back, sealed for glycerine filling.

Window

Safety Glass

Pointer

Aluminium - black finish, balanced.

Dial

Black numerals on white background

Scale

Graduations to AS1349 - 1986

Movement

Stainless steel rack and pinion

Tube & Shank

Stainless steel 316 Ti (DIN 1.4571) welded.

Connection

1/2" NPT standard.

Accuracy

Maximum error will not exceed $\pm 1\%$ of
Full scale deflection

Overload

Ranges $\leq 10,000\text{kPa}$ - 125% of range
Ranges $\geq 10,000\text{kPa}$ - 115% of range.

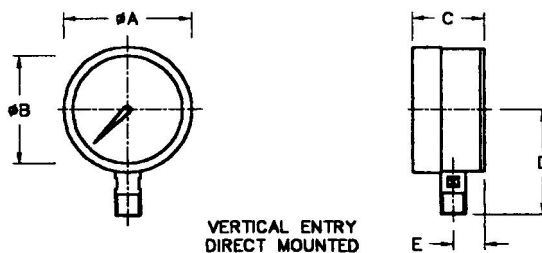
Guarantee

2 years.

DIMENSIONS

APPROXIMATE WEIGHT

Filled: 1.1 kg
 Dry: 0.6 kg



SP SERIES	DIMENSIONS IN mm				
	#A	#B	C	D	E
100 NOM. DIA.	108	90	62	92	28
150 NOM. DIA.	162	144	62	119	28

ORDER CODE

S-100	Code	MOUNTING/INSTALLATION			
	1	Direct Mounting Bottom Connection			
		CODE	PRESSURE CONNECTION		
		A	1/2" NPT Male		
		B	Other, Please specify.		
		CODE	PRESSURE RANGES kPa		
		0	-100	-	150
		1	-100	-	0
		2	0	-	100
		3	0	-	250
		4	0	-	400
		5	0	-	600
		6	0	-	800
		7	0	-	1,000
		8	0	-	1,600
		9	0	-	2,500
		10	0	-	4,000
		11	0	-	6,000
		12	0	-	10,000
		13	0	-	16,000
		14	0	-	25,000
		15	0	-	60,000
S-100	1	A	7	Typical Order Code	

Options

- N.A.T.A. Calibration
- Isolating Diaphragm Seals
- Special Pressure Connections
- Other Mounting Arrangements
- Electric Contacts
- Alternative Calibration Units
- High Accuracy Calibration to N.A.T.A.

Other pressure gauges in the Measurement Resources range include the 'W' series for the water industry, the 'J' & 'K' differential gauges and the '504' series for military & marine applications.



Measurement Resources Pty Ltd
 A.C.N. 003 247 738

HEAD OFFICE & FACTORY

33 – 37 College Street
 P.O. Box 145
 Gladesville, N.S.W. 2111 Australia
 Telephone: (02) 9816 3377, Fax: (02) 9816 3806
 International Code: 61 + 2 **NATIONAL FREE CALL NUMBER: 1 800 626 476**

THE COMPANY RESERVES THE RIGHT TO MODIFY THIS DESIGN WITHOUT NOTIFICATION