

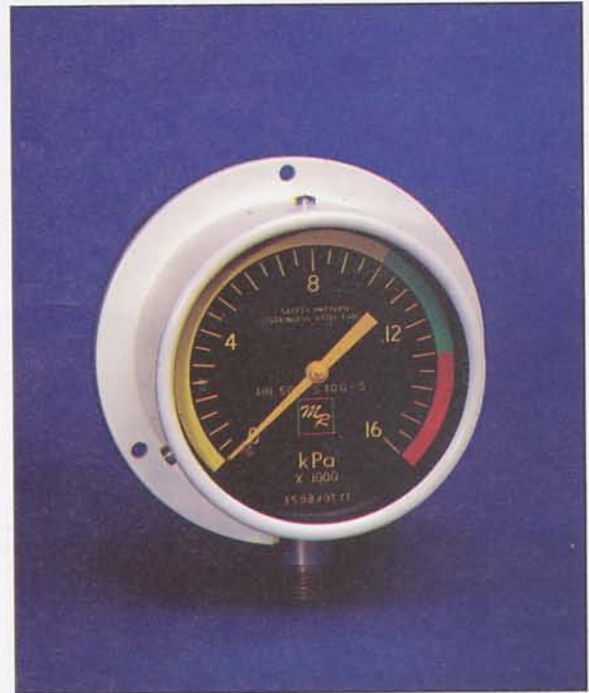
SAFETY PATTERN PRESSURE GAUGES

FULL SAFETY PATTERN CONSTRUCTION

SAFETY GLASS WINDOW

MILITARY MARINE ACCEPTED

SHOCK AND ENDURANCE TESTED



Designed to be both inherently safe for any high pressure gas duty mechanically strong enough to meet the exacting Defence Industry shock and endurance testing specification

504 Series is manufactured in Europe by the company that invented the bourdon tube to Measurement Resources specifications with Australian calibration and testing.

504 Series are fully safety pattern construction.

While 504 is mainly found in the gas and power generation industries special options can be incorporated to meet particular requirements. The above illustration shows a variant currently being supplied in volume for a major Australian Defence program.

Meeting standards A.S. 1349-1986. Section 3.8.1 and 1780-1985 section 5.1.1. The gauges also meet European and Australian Standards.

SPECIFICATION

Nominal Diameter

63, 100, 150, 200, 250, 300mm

Case & Bezel

Aluminium alloy. 25mm blown out disc push on bezel.

Window

Splinter proof safety glass

Pointer

Aluminium alloy balanced and black finish.

Movement

Standard brass plates and links, stainless steel pinions and arbor; optional all stainless steel or monel.

Scale

Standard black numerals on white background, colours optional.

Tube & Shank

Standard phosphor bronze tube silver soldered to brass connection. Option stainless steel or monel.

Connection

Standard 1/4, 3/8 or 1/2" BSP

Accuracy

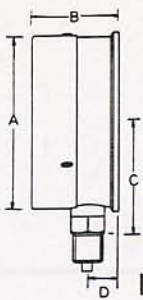
Standard error will not exceed 1% over 90% of scale

Option

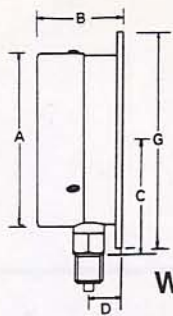
error will not exceed 0.25% of full scale

Overload

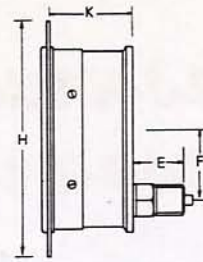
Up to 16,000 Kpa	25%
16,001 to 600,000 Kpa	15%
600,000 Kpa as above	10%



DIRECT MOUNTING



WALL MOUNTING



FLUSH PANEL MOUNTING

Gauge Dimensions

GAUGE SIZE (mm) Nom.	A	B	C	D	E	F	G	H	K
63	68	42	46	17	29	22	89	89	38
100	102	49	65	20	30	35	127	133	41
150	159	56	102	19	38	54	181	187	57
200	205	53	142	22	38	54	235	232	52
250	256	60	152	24	38	54	292	305	52
300	307	60	178	24	38	54	343	368	52

Standard Connections

GAUGE SIZE (mm) Nom.	63	100, 150 & 200	250 & 300
Direct & Surface mounting	Up to 60 bar	1/4" BSP	3/8" BSP
	Above 60 bar	1/4" BSP	1/2" BSP
Flush mounting	All ranges	1/4" BSP	3/8" BSP

or corresponding APINPT, and B.S.P. taper pipe thread

Fixing Dimensions

Gauge Size (mm) Nom.	SURFACE MOUNTING			FLUSH MOUNTING		
	P.C.D.	HOLE SIZE	PANEL CUT OUT	FLANGE DIA. MAX.	P.C.D.	HOLE SIZE
63	76	M4	70	90	78	M4
100	116	M5	112	134	121	M5
150	168	M5	165	188	175	M5
200	221	M5	215	240	225	M5
250	273	M6	270	305	285	M6
300	325	M6	330	370	345	M6

ORDER CODE

504	CODE	NOMINAL DIAMETER
	63	63mm
	100	100mm
	150	150mm
	200	200mm
	250	250mm
	300	300mm
	CODE	MOUNTING/INSTALLATION
	1	Direct mounting bottom connection
	2	Wall mounting back flange.
	3	Flush panel mounting clamp fixing
	CODE	PRESSURE CONNECTION
	A	B S P as above standard
	O	Other please advise
	CODE	PRESSURE RANGE KPa
	1	-100 to + 150
	2	-100 to + 300
	3	-100 to + 500
	4	-100 to + 900
	6	100
	7	160
	8	250
	9	400
	10	600
	11	800
	12	1 000
	13	1 600
	14	2 500
	15	4 000
	16	6 000
	17	8 000
	18	10 000
	19	16 000
	20	25 000
	21	40 000
	22	60 000
	23	80 000
	24	100 000
	CODE	ACCURACY
	A	Error not greater than 1% of range between 10% and 90% of range AS 1349
	B	Error not greater than 0.25% of range between 10% and 90% of range AS 1349
	CODE	CONSTRUCTION MATERIAL
	1	Standard aluminium case phosphol bronze tube.
	2	As above but stainless steel tube and movement.
	3	As above but monel tube and movement.
504	100	1 A 14 A 1 Typical Order Code



Measurement Resources Pty Ltd

A.C.N. 003 247 738

HEAD OFFICE & FACTORY

33-37 College Street
 P.O. Box 145
 Gladesville, N.S.W. 2111 Australia
 Telephone: (02) 816 3377, Fax: (02) 816 3806

SOUTH EAST REGIONAL OFFICE

2nd Floor, 541 Blackburn Road
 P.O. Box 558
 Mt Waverley Vic. 3149 Australia
 Telephone: (03) 550 0821, Fax: (03) 562 9839

THE COMPANY RESERVES THE RIGHT TO MODIFY THIS DESIGN WITHOUT NOTIFICATION