

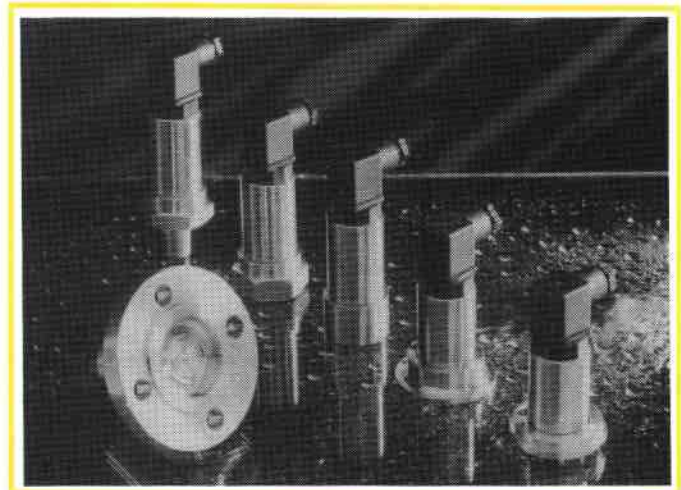
PRESSURE TRANSMITTER

FULL OUTPUT SPANS FROM
13 kPa TO 0-40,000 kPa

STAINLESS STEEL BODY AND
CONNECTION. HASTELLOY OR
STAINLESS STEEL DIAPHRAGM

3:1 RANGEABILITY

FLANGED, THREADED OR
SANITARY CONNECTIONS



*GAUGE
AND ABSOLUTE*

*RUGGED CONSTRUCTION
FOR ARDUOUS DUTIES*

*INTEGRATED
ELECTRONICS*

*2 WIRE
4-20mA OUTPUT*

A compact design featuring stainless steel body with welded Hastelloy or stainless steel diaphragm. Integral electronics with span and zero adjustments, together with a wide range of process connections, make the instrument ideal for most pressure measurement application in process control and automation systems.

The integral amplifier provides a direct 4-20mA output and features full zero and span user calibration facility.

Unique sensor technology incorporates a precision metallic diaphragm with nesting backplate affording exceptional protection against overpressure and shock, whilst retaining excellent sensitivity and resolution.

Rigorous testing ensures quality and reliability of every unit. Each instrument is subject to a 100% mass spectrometry inspection of containment welds, combined thermal-pressure cycling and a 24 hour 'burn-in' test prior to final calibration.

SPECIFICATION

BODY AND CONNECTION

316 Stainless steel

DIAPHRAGM

Hastelloy C276 or 17-4 pH stainless steel

ASSEMBLY

Electron Beam and Pulsed Arc Tig Fusion welds

SUPPLY

2-wire 9 to 32V DC

SIGNAL OUTPUT

4-20 mA DC

LOAD

$L\Omega = \frac{\text{Supply Volts} - 9}{0.02}$

ELECTRICAL CONNECTION

Standard Din Plug

ZERO ADJUSTMENT

±10% of normal range

SPAN ADJUSTMENT

3 to 1 turndown

PROTECTION

IP65

HUMIDITY

0 to 100% non-condensing

PROCESS TEMPERATURE

-20 to 100°C

MAXIMUM ERROR

±0.25% terminal based straight line

TEMPERATURE EFFECT

Less than 0.02% FS/°C

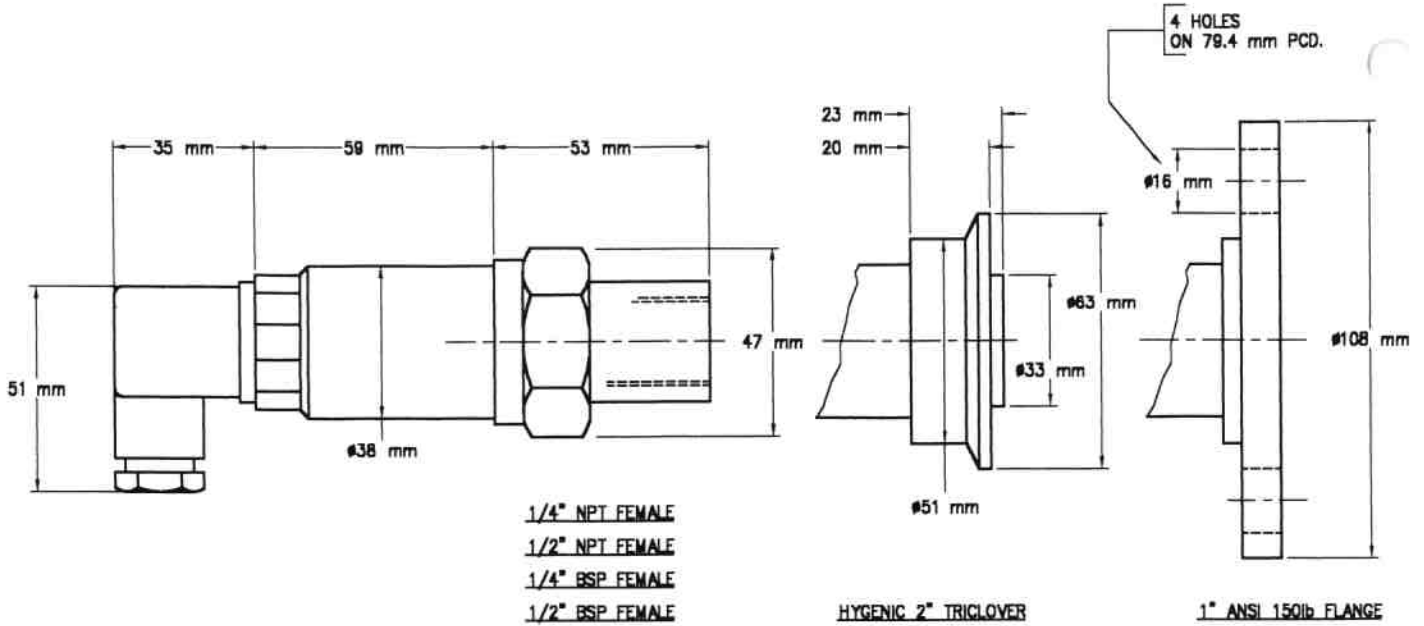
OVERLOAD

Minimum 10 x nominal range up to 490 kPa

Minimum 5 x nominal range up to 3000 kPa

Minimum 2 x nominal range above 3000 kPa

CONNECTION OPTIONS



ORDER CODE

500	CODE	STAINLESS STEEL BODY			
	G	Gauge Pressure			
	A	Absolute Pressure			
	CODE	PROCESS CONNECTION IN STAINLESS STEEL			
	1	1" ANSI 150lb flange			
	2	Hygienic 2" Triclover			
3	1/2" NPT female				
4	1/4" NPT female				
5	1/2" BSP female				
6	1/4" BSP female				
	CODE	NORMAL RANGES			
	A	0-39 kPa			
	B	0-78 kPa			
	C	0-157 kPa			
	D	0-314 kPa			
	E	0-490 kPa			
	F	0-1000 kPa			
	G	0-3000 kPa			
	H	0-4000 kPa			
	I	0-10,000 kPa			
	J	0-15,000 kPa			
	K	0-20,000 kPa			
	L	0-30,000 kPa			
	M	0-40,000 kPa			
		CODE	SPECIAL CALIBRATION		
		NR	Not Required		
		RO	Reversed Output		
		ZO	Zero Offset (Advise requirement)		
500	G	1	10	NR	Typical Order Code

All transmitters fitted with span adjustment allowing 3:1 turn-down



Measurement Resources Pty Ltd
 A.C.N. 803 247 738

HEAD OFFICE & FACTORY

33 – 37 College Street
 P.O. Box 145
 Gladesville, N.S.W. 2111 Australia
 Telephone: (02) 9816 3377, Fax: (02) 9816 3806
 International Code: 61 + 2 **NATIONAL FREE CALL NUMBER: 1 800 626 476**

THE COMPANY RESERVES THE RIGHT TO MODIFY THIS DESIGN WITHOUT NOTIFICATION