

# FLANGE TYPE DIAPHRAGM SEAL

## DT122

DT122 diaphragm seal is designed to be used in highly viscous process media such as pulp, paper, waste treatment, and plastic/chemical process industries. DT122 is easy to assemble with pressure gauges, pressure switches, and pressure instruments.

### Technical Data

**Instrument connection:** female thread ¼" to ½" BSP or NPT

**Membrane size:** Ø36, Ø45, Ø75 available

**Process connection:** ½" to 3" Flange, JIS, ANSI, DIN available

**Temperature limited:** -40~+150°C cooling element or capillary line up to 350°C

**Pressure range limited:**

Ø75 Membrane: -760 mmHg~0, Minimum process flange 2" x 150#

Ø45 Membrane: Maximum up to 40 kg/cm<sup>2</sup>  
Minimum -1~5 kg/cm<sup>2</sup>, 0~6 kg/cm<sup>2</sup>  
Minimum process flange ¾" x 150#

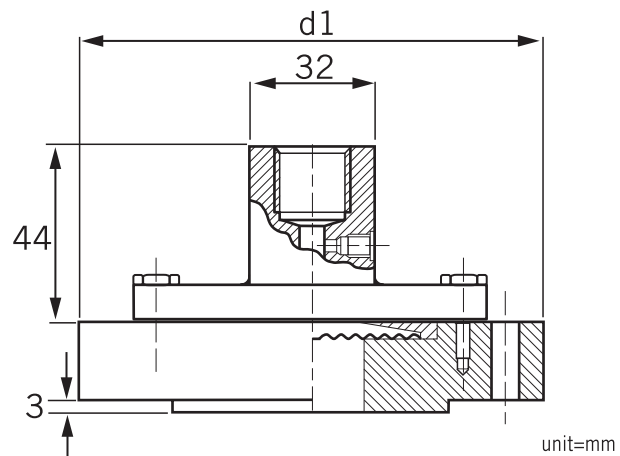
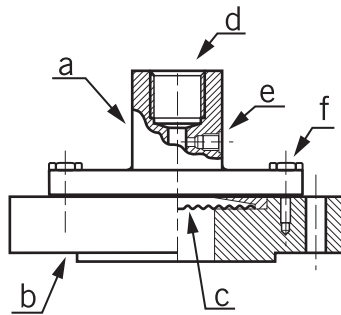
Ø36 Membrane: Maximum up to 40 kg/cm<sup>2</sup>  
Minimum 0~10 kg/cm<sup>2</sup>  
Minimum process flange ½" x 150#

**Material:** Upper & Lower housing-SS316(standard), others on request  
Membrane: SS316L (standard); Options- Hastelloy C276, tantalum, and others on request.



### Dimensions

Item	Description of Parts
a	Upper housing
b	Lower housing
c	Membrane
d	Instrument connection
e	Filling port
f	Screw bolt



Please note: d1 size is according to the flange rating and size.

\*The flange sizes of 1" to 4" are available upon request.  
The dimensions are according to the standard specifications of JIS, ANSI and DIN.

### Ordering Information

DT122	Code	Instrument Connection (Female)
		(A) ¼"BSP (B) ¼"NPT (C) ⅜"BSP (D) ⅜"NPT (E) ½"BSP (F) ½"NPT
		<b>Code</b> <b>Membrane size</b>
		(A) Ø36 (B) Ø45 (C) Ø75
		<b>Code</b> <b>Process connection rating</b>
		(1) ½" (2) ¾" (3) 1" (4) 1½" (5) 2" (6) 3" (7) Option
		<b>Code</b> <b>Flange rating</b>
		(1) 150# (2) 300# (3) PN16 (4) PN25 (5) JIS 10K (6) JIS 20K (7) Option
		<b>Code</b> <b>Upper housing material</b>
		(S) SS316(standard) (0) Option
		<b>Code</b> <b>Lower housing material</b>
		(S) SS316 (0) Option
		<b>Code</b> <b>Membrane material</b>
		(1) SS316L (2) Hastelloy C276 (3) Tantalum (4) Option
DT122		Complete ordering code