

# Bourdon Tube Pressure Gauges

## Solid Front and Blow-out Back

### Polyamide Screw Ring Case

### Standard (RSK) or Glycerine Filled (RSKG)

Models

**RSK 100**

**RSKG 100**

#### Application

For fluid and gaseous media (compatible to the wetted parts) which are not highly viscous and do not tend to polymerize, especially where a rugged, rust resistant, sealed case (dirty damp or corrosive atmosphere) and high safety standards are required.

#### Nominal Case Size

100 mm (4")

#### Accuracy

1.0 % full scale according to EN standards

#### Pressure Ranges (EN 837)

Model -1\*: 0/0.6 up to 0/1 000 bar resp. 0/15 up to 0/15 000 psi

Model -2\*: 0/1 600 and 0/2 500 bar resp. 0/20 000 up to 0/35 000 psi

Model -3\*: 0/0.6 up to 0/2 500 bar resp. 0/15 up to 0/35 000 psi

also all corresponding vacuum and compound ranges (\* compare below)

#### Pressure Limitations

Normal service: full scale value

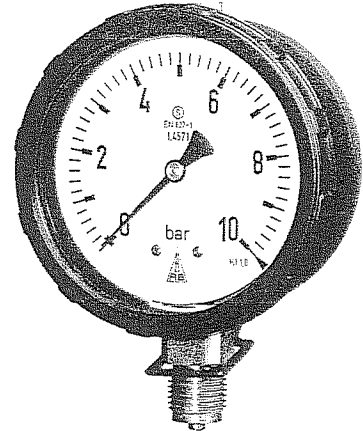
Pulsation service: 90% of full scale value (2500 bar, 30000/35000 psi 66% f.s.)

Temporary: 130% of full scale value (2500 bar, 30000/35000 psi: f.s.)

#### Protection Type (EN 60 529 / IEC 529)

IP 54 dry version / IP 65 filled version

Further information about advantages, applications, specifications, temperature limitations and pressure ranges of Bourdon tube pressure gauges with an accuracy of 1.0 % f.s. according to EN can be found on general information leaflet 1000.



#### Safety Features ☺

Tested according to S3 EN837-1; solid front [304 stainless steel (1.4301)] between measuring system and dial and a full blow-out safety back with retain straps. Should the Bourdon tube rupture, the entire case back separates, allowing full relief. Filled version with pressure equalizing membrane.

#### Optional Special Configurations

- Connection M 20 x 1,5, ¼" BSP or NPT, others upon request
- Wetted parts monel = ordering code: -6:  
ranges 0/0.6 up to 0/600 bar resp. 0/15 up to 0/10 000 psi, movement stainless steel, Bourdon tube argon arc welded, ≤ 40 bar (≤ 800 psi) C-form, ≥ 60 bar (≥ 1 000 psi) helical
- Inlet port restrictor screw brass, stainless steel or monel
- Special scales, combination pressure and temperature, other dual ranges, scales with high-precision graduations (with knife-edge pointer)
- Receiver gauge 0.2-1 bar or 3-15 psi
- Adjustable pointer, mechanism aluminum
- Stationary red pointer on the dial
- Other than vertical installation
- Top or side connection
- Oxygen service, free of grease and oil

#### Standard Configuration

RSK = dry version / RSKG = filled version, filling fluid glycerine

#### Connection

½" BSP (standard) or ½" NPT bottom connection

#### Wetted Parts

Ordering Code -1 : Socket: = brass

Bourdon Tube:  
≤ 40 bar (800 psi) = bronze, C-form,  
soft soldered

≥ 60 bar (1 000 psi) = 316 Ti, helical,  
silver brazed

≥ 600 bar (8000 psi) = alloy steel, helical,  
silver brazed

Ordering Code -2 : 0/1600 and 0/2500 bar (20 000 up to 35 000 psi)

Socket: = stainless steel  
316 Ti (1.4571)

Bourdon Tube: = alloy steel, helical,  
argon arc welded

Ordering Code -3: Socket: = stainless steel  
316 Ti (1.4571)

Bourdon Tube:  
≤ 40 bar (800 psi) = 316 Ti, C-form,  
argon arc welded

≥ 60 bar (1 000 psi) = 316 Ti, helical,  
argon arc welded

≥ 1 600 bar (20 000 psi) = NiFe-alloy, helical,  
argon arc welded

#### Movement

- 1 : brass / German silver, - 2 and - 3 : stainless steel

#### Dial

Aluminum alloy, black figures, white background

#### Pointer

Aluminum alloy, black

#### Case and Ring

Glass fiber reinforced polyamide 6 B black screw ring case

#### Lens

Laminated safety glass, marked with "SAFETY GLASS"

#### How to Order:

Please specify:

Model Code: **RSK 100** = dry version  
**RSKG 100** = filled version,  
filling fluid glycerine

Wetted Parts: Ordering code -1, -2 or -3,  
compare left side

Case Configuration: Code letters: **Rh**  
compare reverse side  
(standard case = bottom connection,  
no code letter required)

Pressure Range: According to EN 837-1  
e.g. **0 - 4 bar** or **600 psi**

Connection Thread: ½" BSP (= standard)  
or ½" NPT

Special Configurations: (See above.)

#### Examples for Ordering Information:

- RSK 100-3, 0/6 bar, ½" BSP
- RSKG 100-1, 1000 psi, ½" NPT